

NUEVA COLECCIÓN TEJIDOS



NUEVA COLECCIÓN TEJIDOS
POLIPIEL

www.topsillasymasas.com

ÍNDICE / INDEX

#CATEGORIA/CATEGORY A

ATLANTIS FR	3
NATURA	5

#CATEGORIA/CATEGORY B

REAL	7
------	---

#CATEGORIA/CATEGORY C

ACUA LIS	10
ANTIQUE	13
ASTON	15
BROOKLAND	19
CADET COLOURS	23
VALENCIA	25

#CATEGORIA/CATEGORY D

ALLANTE	29
MAGLIA	32
SILVERTEX	35

#CATEGORIA/CATEGORY E

SKAI PAVINTO	38
SKAI TORONTO EN	40



TELA / FABRIC

ATLANTIS FR



DUNA 01008003



LIMAO 01008005



NEVE 01008011



ROSA 01008027



PEROLA 01008018



TANGERINA 01008026



CEU 01008014



CYCLAME 01008012



MORANGO 01008004



LARANJA 01008010



TURQUESA 01008029



FURACAO 01008006



CARMIN 01008022



KIWI 01008013



LAGUNA 01008015



ANTRACITE 01008016



CEREJA 01008017



PRIMAVERA 01008028



AZURITE 01008002



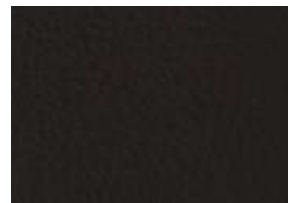
PRETO 01008001



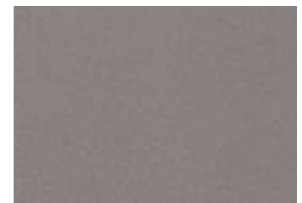
VINHO 01008007



SALSA 01008008



CACAU 01008019



RATO 01008022



AMÊNDOA 01008025



NATURAL 01008020



ARGILA 01008021



CHOCOLATE 01008009

CATEGORY A



TELA / FABRIC

CATEGORY A

ATLANTIS FR



TERRA 01008024

COMPOSICIÓN | COMPOSITION: 79% PVC 21% PES

PESO | WEIGHT: 520 g/m² ±20g/m²

ANCHO | WIDTH: 140cm ±2cm

LONGITUD DE LAS PIEZAS | ROLL LENGTH: 40ml

ESPESOR | THICKNESS: 0,90mm ±0,10ml

CLASE IGNÍFUGA | FIRE PROOF NORM

EN 1021-1 (CIGARRO | CIGARETTE) BS5852 PART 0

EN 1021-2 (LLAMA | FLAME) BS5852 PART 1

IMO PART 8 Upholstery

SOLIDEZ DEL COLOR A LA LUZ | COLOUR FASTNESS TO ARTIFICIAL LIGHT

EN ISO 105-B02: >5

RESISTENCIA A LA ABRASIÓN | ABRASION RESISTANCE

ISO 5470-2 NÚMERO CICLOS/ NO. OF CYCLES: 100,000

ANTIBACTERIANO | ANTIBACTERIAL

ISO 22196: 2011

TASA DE INHIBICIÓN | INHIBITION RATE : >99.9%



TELA / FABRIC

NATURA

CATEGORY A



WHITE 01104002



COPPER 01104025



PISTACHIO 01104007



BONDI 01104022



IVORY 01104003



HONEY 01104009



TEA 01104020



AZUR 01104012



RAPHIA 01104004



BRICK 01104014



SAGE 01104021



NAVY 01104013



DESERT 01104005



CARDINAL 01104016



UMBER 01104024



WOLF 01104023



OLD GOLD 01104006



BLACK 01104001



COFFEE 01104010



GREY 01104008



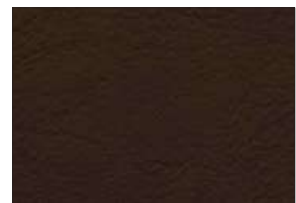
EGG 01104017



WINE 01104015



BLOSSOM 01104018



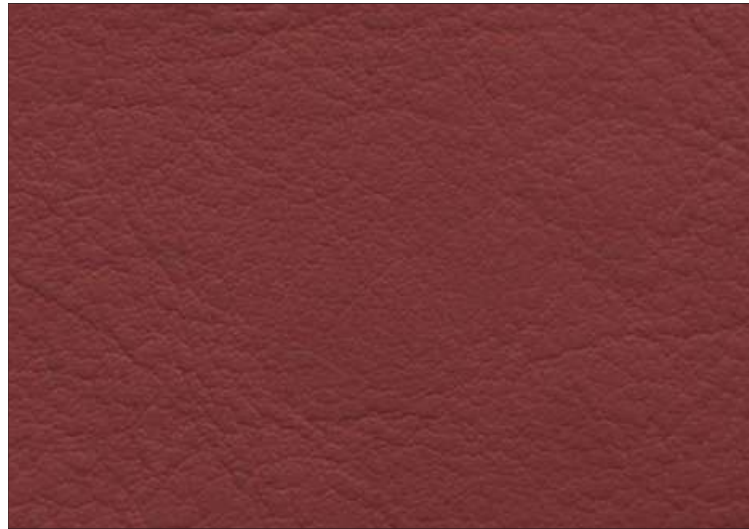
WENGE 01104011



TELA / FABRIC

CATEGORY A

NATURA



REDWOOD 01104019

COMPOSICIÓN | COMPOSITION: 66% PVC | 11% PU | 23% PES

PESO | WEIGHT: 600 g/m² ±5%

ANCHO | WIDTH: 140cm ±2cm

LONGITUD DE LAS PIEZAS | ROLL LENGTH: 40ml

ESPESOR | THICKNESS: 0,90mm ±0,10ml

CLASE IGNÍFUGA | FIRE PROOF NORM

EN 1021-1 (CIGARRO | CIGARETTE) BS5852 PART 0

EN 1021-2 (LLAMA | FLAME) BS5852 PART 1

B2 (DIN 4102-1)

IMO PART 8 Upholstery

SOLIDEZ DEL COLOR A LA LUZ | COLOUR FASTNESS TO ARTIFICIAL LIGHT

EN ISO 105-B02: 7/8

RESISTENCIA A LA ABRASIÓN | ABRASION RESISTANCE

ISO 5470-2 NÚMERO DE CICLOS/ NO. OF CYCLES: 300,000

ANTIBACTERIANO | ANTIBACTERIAL

ISO 22196: 2011

TASA DE INHIBICIÓN | INHIBITION RATE : >99.9%

CERTIFICADO SANITARIO HZ/C/00558/11 PARA TAPICERÍA

HEALTH QUALITY CERTIFICATE HZ/C/00558/11 FOR UPHLOSTERED FURNITURE



TELA / FABRIC

REAL



TEAL 01187037



AVOCADO 01187036



OLIVE 01187012



LICHTGRAU 01187008



CORAL 01187029



JADE 01187003



TURKIS 01187013



ROSÉ 01187028



SKYLIGHT 01187030



BALTIC 01187007



DELPHY 01187006



LAVENDEL 01187014



PURE WHITE 01187026



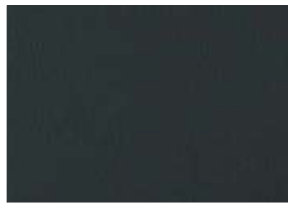
AUSTER 01187016



PLATIN 01187023



GRA PHITE_01187020



PRETO 01187001



WEISS 01187015



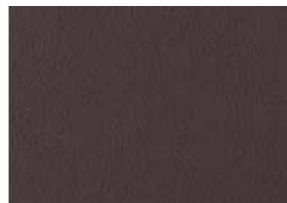
SISAL 01187005



LEINEN 01187017



BEIGE_01187011



MOCCA 01187002



SQUASH 01187035



CAMEL 01187031

CATEGORY B



TELA / FABRIC

REAL

CATEGORY B



TERRACOTTA 01187010



COGNAC 01187019



CHESTNUT 01187032



MELONE 01187025



ORANGE 01187034



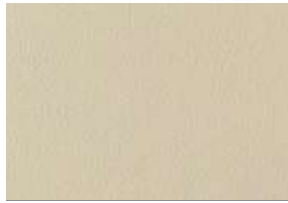
TOMATO 01187033



ROT 01187024



KIRSCH 01187009



IVORY METALLIC 01187027



WARM GREY 01187018



TAUPE 01187004



MOSS_01187022



METEOR 01187021



TELA / FABRIC

CATEGORY B

REAL



TERRACOTTA 01187010

COMPOSICIÓN | COMPOSITION: SUPERFICIE 100% VINYL - SUPORTE 100% POLYESTER F-SEA

PESO | WEIGHT: 770 g/m² ±5%

ANCHO | WIDTH: 140cm ±2%

LONGITUD DE LAS PIEZAS | ROLL LENGTH: 30ml

ESPESOR | THICKNESS: 1,10mm ±0,10ml

CLASE IGNÍFUGA | FIRE PROOF NORM

EN 1021-1 (CIGARRO | CIGARETTE) BS5852 PART 0

EN 1021-2 (LLAMA | FLAME) BS5852 PART 1

CAL TB 117

IMO PART 8 Upholstery

FMVSS 302

M2 (UNE 23 723-90 1R)

SOLIDEZ DEL COLOR A LA LUZ | COLOUR FASTNESS TO ARTIFICIAL LIGHT

EN ISO 105-B02: >=5

RESISTENCIA A LA ABRASIÓN | ABRASION RESISTANCE

NÚMERO DE CICLOS/ NO. OF CYCLES: 350,000

ANTIBACTERIANO | ANTIBACTERIAL

ISO 22196: 2011

TASA DE INHIBICIÓN | INHIBITION RATE : >99.9%



TELA / FABRIC

ACUA LIS



BLANCO_00



CREMA_02



CRUDO_04



NATURAL_82



ARENA_07



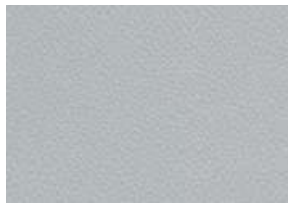
PIEDRA_18



CASTANO_16



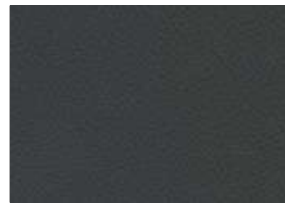
CHOCOLATE_20



GRIS_71



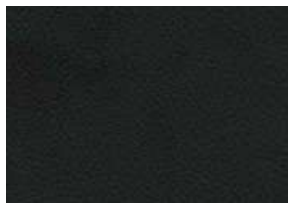
PIZARRA_72



PLOMO_75



MARRON_23



NEGRO_90



CELESTE_63



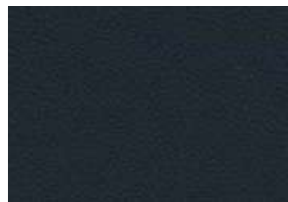
CARIBE_60



TURQUESA_61



AZUL_68



MARINO_69



LIMA_42



PISTACHO_41



CAQUI_44



ESMERALDA_46



VERDE_47



MALVA_28

CATEGORY C



TELA / FABRIC

ACUA LIS



LILA_26



VIOLETA_81

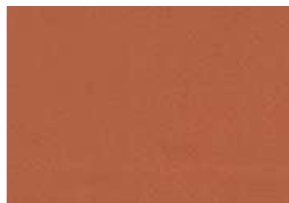


SALMON_30

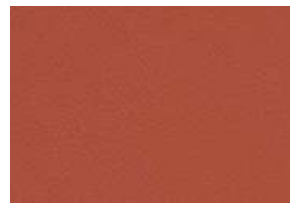


ROSA_24

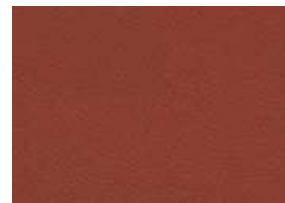
CATEGORY C



NECTAR_80



NARANJA_14



TEJA_17



ROJO_29



GRANATE_25



VAINILLA_08



MOSTAZA_12



OCRE_09



SOL_10



AMARILLO_21



TELA / FABRIC

CATEGORY C

ACUA LIS



CANELA_11

COMPOSICIÓN | COMPOSITION: 100% VINYL - 100% POLYESTER

PESO | WEIGHT: 590 g/m²

ANCHO | WIDTH: 140cm ±2%

LONGITUD DE LAS PIEZAS | ROLL LENGTH: ±45m

ESPESOR | THICKNESS: 1,15mm ±0,10mm

CLASE IGNÍFUGA | FIRE PROOF NORM

EN 1021-1 (CIGARRO | CIGARETTE) BS5852 PART 0

EN 1021-2 (LLAMA | FLAME) BS5852 PART 1

CAL TB 117

IMO MSC 307 (88)

SOLIDEZ DEL COLOR A LA LUZ | COLOUR FASTNESS TO ARTIFICIAL LIGHT

ISO 105-B02: 7

RESISTENCIA A LA ABRASIÓN | ABRASION RESISTANCE

NÚMERO DE CICLOS/ NO. OF CYCLES: 300,000

TRATAMIENTO ANTIBACTERIANO | ANTIHONGOS

ANTIBACTERIAL TREATMENT | MILDEW RESISTANCE



TELA / FABRIC

ANTIQUÉ



835 Hessian



925 Putty



906 Ash



708 Truffle



817 Chestnut



501 Smoke



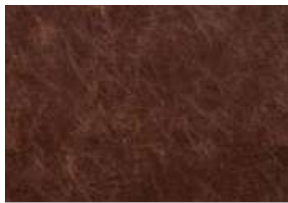
801 Tan



204 Moss



954 Graphite



814 Espresso



231 Olive



803 Mahogany

CATEGORY C



200 Green



105 Indigo



300 Gold



400 Red



TELA / FABRIC

CATEGORY C

ANTIQUÉ



400 Red

COMPOSICIÓN | COMPOSITION: PVC 72% - PU 1% - CO 27%

PESO | WEIGHT: 730 g/m²

ANCHO | WIDTH: 140cm

LONGITUD DE LAS PIEZAS | ROLL LENGTH: ±30ml

ESPESOR | THICKNESS: 1,6mm ±0,20ml

CLASE IGNÍFUGA | FIRE PROOF NORM

EN 1021-1 (CIGARRO | CIGARETTE) BS5852 IGN SOURCE 5

EN 1021-2 (LLAMA | FLAME)

BS 7176 Medium Hazard

CAL TB 117

IMO PART 8 Upholstery

SOLIDEZ DEL COLOR A LA LUZ | COLOUR FASTNESS TO ARTIFICIAL LIGHT

GRADE 8+

RESISTENCIA A LA ABRASIÓN | ABRASION RESISTANCE

NÚMERO DE CICLOS/ NO. OF CYCLES: 100,000



TELA / FABRIC

ASTON

CATEGORY C



102 LIGHT BLUE



105 INDIGO



108 DELPH



110 PACIFIC



116 NAVY



117 ROYAL



131 AZURE



134 SKY



151 TEAL



192 INK



198 HYACINTH



203 EMERALD



204 MOSS



205 SAGE GREEN



213 AUBERGINE



215 ELM



219 SEAFOAM



220 LIGHT GREEN



226 LIME



228 BOTTLE GREEN



233 PISTACHIO



238 CITRUS



251 EAU DE NIL



253 CARDAMOM



TELA / FABRIC

ASTON

CATEGORY C



300 GOLD



314 MUSTARD



400 RED



401 AMBER



407 BURGUNDY



408 TERRACOTTA



409 MAGENTA



411 SPICE



412 PURPLE



414 WINE



444 CHERRY



506 MIST



507 RICH IVORY



613 PALE PINK



618 BLUSH



700 BROWN



703 MINK



801 TAN



805 CREAM



807 MUSHROOM



813 LINEN



814 EXPRESSO



815 BUFF



817 CHESTNUT



TELA / FABRIC

CATEGORY C

ASTON



823 CHABLIS



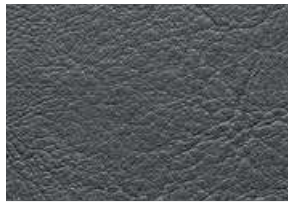
837 STONE



877 OYSTER



900 BLACK



904 PEWTER



905 DOVE



906 ASH



919 ZINC



953 PLATINUM



953 GUNMETAL



954 GRAPHITE



TELA / FABRIC

CATEGORY C

ASTON



100 BLUE

COMPOSICIÓN | COMPOSITION:

COATING: PVC, PU BLEND

BASECLOTH: COTTON, POLYESTER

PESO | WEIGHT: 730 g/m²

ANCHO | WIDTH: 140cm

CLASE IGNÍFUGA | FIRE PROOF NORM

BS5852: 2006 Ignition Source 5

BS7176: Medium Hazard

EN 1021-1 (CIGARRO | CIGARETTE)

EN 1021-2 (LLAMA | FLAME)

IMO PART 8 Upholstery

NFPA 260 (USA)

CAL TB 117

SOLIDEZ DEL COLOR A LA LUZ | COLOUR FASTNESS TO ARTIFICIAL LIGHT

GRADE 8+

RESISTENCIA A LA ABRASIÓN | ABRASION RESISTANCE

NÚMERO DE CICLOS/ NO. OF CYCLES: 750,000



TELA / FABRIC

BROOKLAND

CATEGORY C



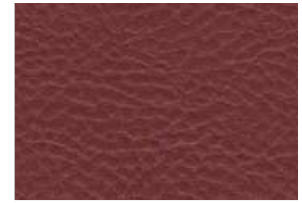
801 TAN



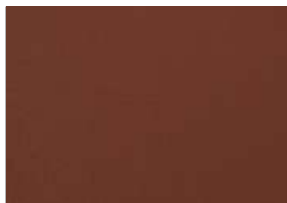
744 SADDLE



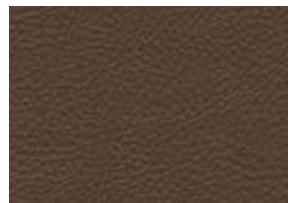
823 CHABLIS



444 CHERRY



400 RED



803 MAHOGANY



624 MULBERRY



407 BURGUNDY



814 ESPRESSO



900 BLACK



904 PEWTER



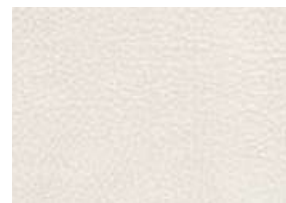
911 STEEL



925 PUTTY



805 CREAM



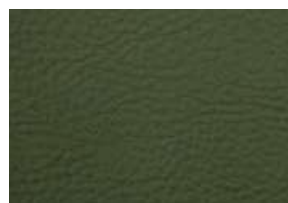
005 CHALK



252 WILLOW



209 WASABI



229 FOREST



501 SMOKE



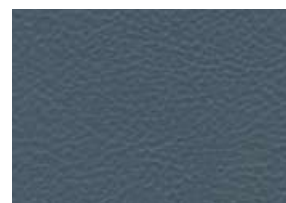
807 MUSHROOM



822 HIDE GREEN



129 OCEAN



108 DELPH



116 NAVY



TELA / FABRIC

CATEGORY C

BROOKLAND



116 NAVY

COMPOSICIÓN | COMPOSITION:

COATING: PVC, PU BLEND

BASECLOTH: COTTON, POLYESTER

PESO | WEIGHT: 720 g/m²

ANCHO | WIDTH: 140cm

CLASE IGNÍFUGA | FIRE PROOF NORM

BS5852: 2006 Ignition Source 5

BS7176: Medium Hazard

EN 1021-1 (CIGARRO | CIGARETTE)

EN 1021-2 (LLAMA | FLAME)

IMO PART 8 Upholstery

NFPA 260 (USA)

CAL TB 117

SOLIDEZ DEL COLOR A LA LUZ | COLOUR FASTNESS TO ARTIFICIAL LIGHT

GRADE 6+

RESISTENCIA A LA ABRASIÓN | ABRASION RESISTANCE

NÚMERO DE CICLOS/ NO. OF CYCLES: 750,000



TELA / FABRIC

CADET COLOURS



Zest-005-Chalk



Zest-104-Cobalt



Zest-105-Indigo



Zest-110-Pacific



Zest 115 Turquoise



Zest 117 Royal



Zest 24 Electric-Blue



Zest 127 Lilac



Zest 128 Violet



Zest 134-Sky



Zest 51 Teal



Zest 155 Duck Egg Blue



Zest 156 Grape



Zest 192 Ink



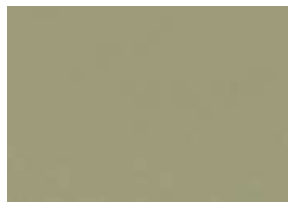
Zest 198 Hyacinth



Zest 201 Jade



Zest 203 Emerald



Zest 204 Moss



Zest 209 Wasabi



Zest 211 Spruce



Zest 215 Elm



Zest 219 Seafoam



Zest 222 Apple



Zest 229 Forest

CATEGORY C



TELA / FABRIC

CADET COLOURS

CATEGORY C



Zest 238 Citrus



Zest 242 Laurel



Zest 243 Cactus



Zest 303 Lemon



Zest 314 Mustard



Zest 326 Hay



Zest 401 Amber



Zest 408 Terracotta



Zest 414 Wine



Zest 424 Vermillion



Zest 438 Tangerine



Zest 440 Scarlet



Zest 444 Cherry



Zest 506 Mist



Zest 509 Plum



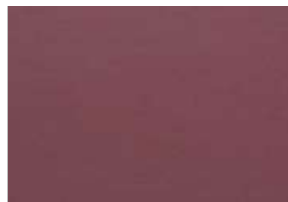
Zest 608 Fuchsia



Zest 613 Pale Pink



Zest 618 Blush



Zest 624 Mulberry



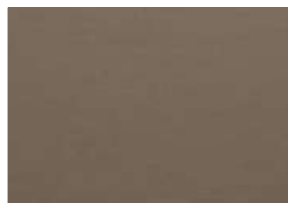
Zest 642 Thistle



Zest 646 Peony



Zest 664 Cerise



Zest 703 Mink



Zest 770 Nutmeg



TELA / FABRIC

CATEGORY C

COLOURS



Zest 805 Cream



Zest 807 Mushroom



Zest 823 Chablis



Zest 843 Chai



Zest 858 Cobble



Zest 900 Black



Zest 901 Silver



Zest 905 Dove



Zest 906 Ash



Zest 925 Putty



Zest 952 Platinum



Zest 954 Graphite



TELA / FABRIC

CATEGORY C

CADET COLOURS



ZEST 242 LAUREL

COMPOSICIÓN | COMPOSITION:

COATING: PVC, PU, ACRYLIC

BASECLOTH: COTTON, POLYESTER

PESO | WEIGHT: 760 g/m² ±5%

ANCHO | WIDTH: 137cm

CLASE IGNÍFUGA | FIRE PROOF NORM

IMO PART 8 Upholstery

NFPA 260 USA

EN 1021-1 (CIGARRO | CIGARETTE)

EN1021-2 (LLAMA | FLAME)

BS5852 PART 2

IGNITION SOURCE 5

BS7174: MEDIUM HAZARD

SOLIDEZ DEL COLOR A LA LUZ | COLOUR FASTNESS TO ARTIFICIAL LIGHT

GRADE 6+

RESISTENCIA A LA ABRASIÓN | ABRASION RESISTANCE

NÚMERO DE CICLOS/ NO. OF CYCLES: 350,000



TELA / FABRIC

VALENCIA

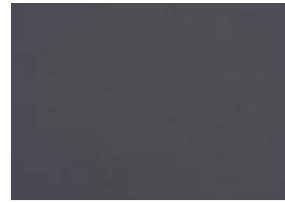
CATEGORY C



107-2113 LOTUS



107-2119 TEAL



107-5065 PETROL



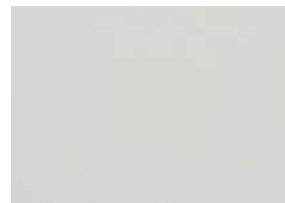
107-4044 WARM GREY



107-2118 ULTRA VIOLET



107-2117 CASHMERE



107-9607 PURE WHITE



107-2116 CAMEL



107-2115 CHESTNUT



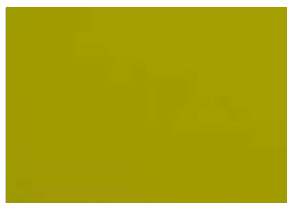
107-2114 ROSÉ



107-2112 TOMATO



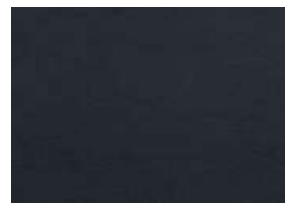
107-2111 SQUASH



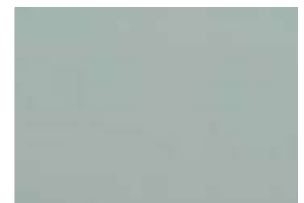
107-2110 AVOCADO



107-2109 CITRUS



107-2108 NIGTH



107-2107 SKYLIGHT



107-2106 CORAL



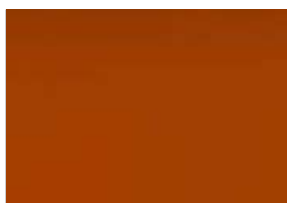
107-2020 SONNE



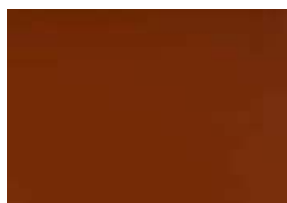
107-6012 SAFRAN



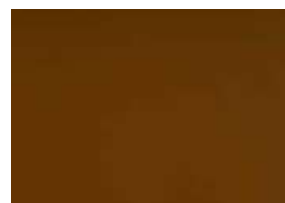
107-6013 MELONE



107-6019 ORANGE



107-6003 NECTARINE



107-0035 TERRACOTTA



107-0033 BUCHE



TELA / FABRIC

VALENCIA

CATEGORY C



107-0001 PRALINÉ



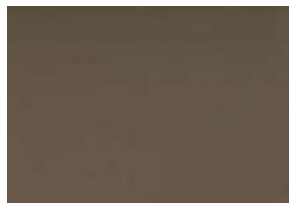
107-6002 BRONZE



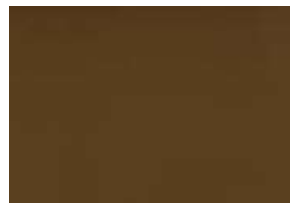
107-9001 SUMATRA



107-4001 MUSHROOM



107-0034 TAUPE



107-0002 COGNAC



107-1001 CHAMPAGNE



107-1050 BEIGE



107-1049 LEINEN



107-1048 SISAL



107-8032 WEISS



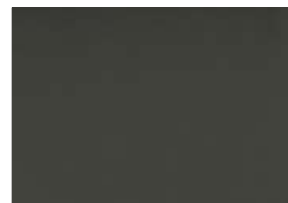
107-4040 AUSTER



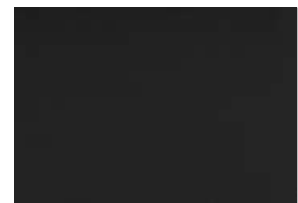
107-4045 PERLE



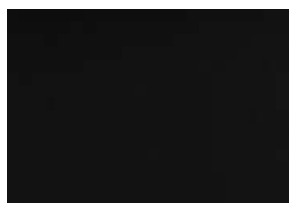
107-4043 PLATIN



107-4052 LICHTGRAU



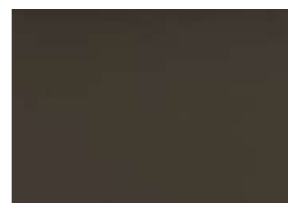
107-4003 GRAPHITE



107-9035 SCHWARZ



107-4002 LAUREL



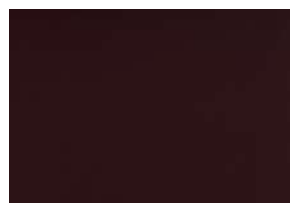
107-5002 MOSS



107-4041 METEOR



107-0020 MOCCA



107-2001 MERLOT



107-2062 PORT



107-2074 KIRSCH



TELA / FABRIC

CATEGORY C

VALENCIA



107-2075 ROT



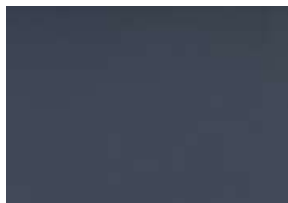
107-2021 PINK



107-2002 BERRY



107-7001 AMETHYST



107-4042 TITAN



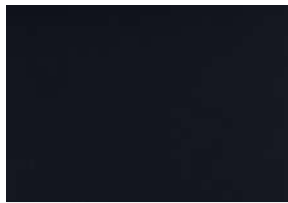
107-3001 LAVENDEL



107-3069 BALTIC



107-3067 DELFT



107-3068 MARINE



107-5057 TURKIS



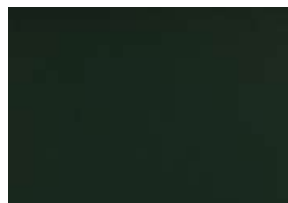
107-5056 JADE



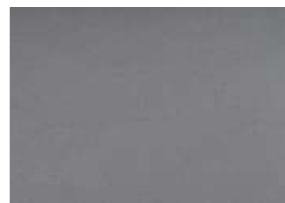
107-5041 APFEL



107-5001 OLIVE



107-5069 GRUN



107-4020 SILVER



107-6020 GOLD



107-1020 IVORY



107-8020 PEARLSENCE



TELA / FABRIC

CATEGORY C

VALENCIA



107-2112 TOMATO

COMPOSICIÓN | COMPOSITION:

COATING: 100% VINYL

BASECLOTH: 100% POLYESTER

PESO | WEIGHT: 650 g/m²

ANCHO | WIDTH: 137cm

LONGITUD DE LAS PIEZAS | ROLL LENGTH: ±30ml

CLASE IGNÍFUGA | FIRE PROOF NORM

EN 1021-1 (CIGARRO | CIGARETTE)

EN 1021-2 (LLAMA | FLAME)

ÖNORM B 3825 Gruppe 1

ÖNORM B 3800 Teil 1

DIN 4102 B2

UNE 23.727-90 1R/M.2

Directive 95/28/CE

EN 71-2: 2006 + A1: 2007

NF P 92-503/M2

IMO A.652(16)Annex 1 8.2 and 8.3

(MED) Council Directive 96/98 EC on marine equipment

UNI 9175 (1987) / UNI 9175/FA1 (1994) Classe 1.IM

FMVSS 302 FAR 25/853

SOLIDEZ DEL COLOR A LA LUZ | COLOUR FASTNESS TO ARTIFICIAL LIGHT

ISO 105-B02: >7/8

RESISTENCIA A LA ABRASIÓN | ABRASION RESISTANCE

NÚMERO DE CICLOS/ NO. OF CYCLES: 300,000



TELA / FABRIC

ALLANTE

CATEGORY D



Black AL-802W



Espresso AL-840



Elephant AL-828



Med. Neutral AL-872



Lt. Sandalwood AL-874



Charcoal AL-804



Ash AL-806



Med. Grey AL-870



Pearl Grey AL-856



Grey AL-808



Regimental Blue AL-821



Galaxy AL-818



Cadet Blue AL-816



Tundra AL-890



River Blue AL-893



Forest AL-905



Emerald AL-906



Turquoise AL-910



Sea Cruise AL-896



Old Rose AL-913



Parrot AL-898



Khaki AL-899



Nu-Antelope AL-824



Nu-Shale AL-809



TELA / FABRIC

ALLANTE

CATEGORY D



Chocolate AL-911



Chestnut AL-907



Beechwood AL-860



Teak AL-868



Twine AL-903



Cinnamon AL-838



Butterscotch AL-902



Honey AL-912



Harvest AL-891



Aubergine AL-908



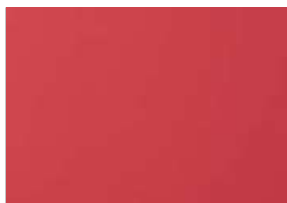
Burgundy AL-832



Wine AL-836



Nu-Red AL-877



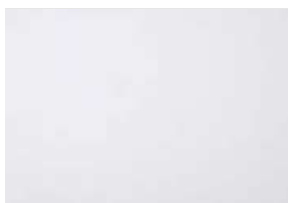
Cayenne AL-901



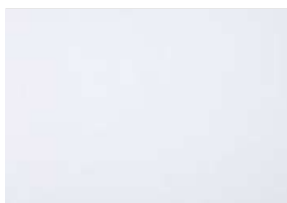
Lt. Neutral AL-862



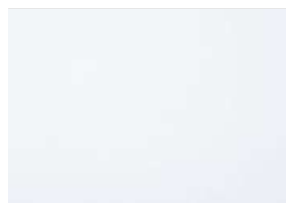
Cream AL-844



Sea Oyster AL-827



Bisque AL-846



White AL-810



Lt. Parchment AL-854



TELA / FABRIC

CATEGORY D

ALLANTE



Nude AL-909

COMPOSICIÓN | COMPOSITION: PVC + POLYESTER

PESO | WEIGHT: 695 g/m² ±45g/m²

ANCHO | WIDTH: 137cm

ESPESOR | THICKNESS: 1,0mm ±0,1mm

CLASE IGNÍFUGA | FIRE PROOF NORM

EN 1021-1 (CIGARRO | CIGARETTE)

EN 1021-2 (LLAMA | FLAME)

IMO PART 8 Upholstery

M2 (NF P 92 503)

MVSS 302

B2 (DIN 4102-1)

SOLIDEZ DEL COLOR A LA LUZ | COLOUR FASTNESS TO ARTIFICIAL LIGHT

EN ISO 105-B02: >=7

RESISTENCIA A LA ABRASIÓN | ABRASION RESISTANCE

NÚMERO DE CICLOS/ NO. OF CYCLES: 300,000



TELA/ FABRIC

MAGLIA



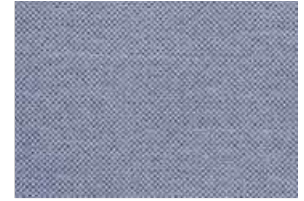
AÇAI
MAG-6030



MAPLE
MAG-6026



SVALBARD
MAG-6022



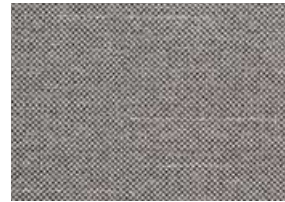
KYANITE
MAG-6023



TAHOE
MAG-6027



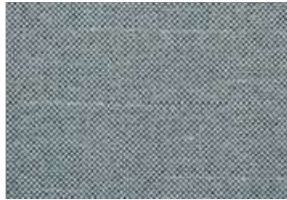
BLACKCAVE
MAG-6032



MONOCHROME
MAG-6024E



ASH
MAG-6031



FJORD
MAG-6021



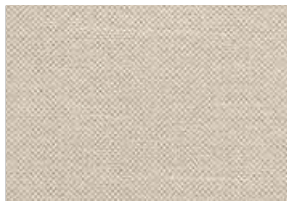
MAUI
MAG-6020



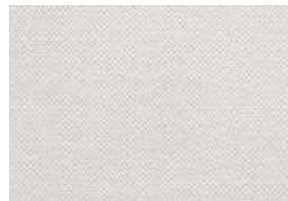
HIVE
MAG-6029



GRIZZLY
MAG-6019



OAK
MAG-6018



ARCTIC
MAG-6017



UYUNI
MAG-5001



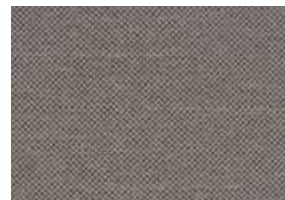
ARMORY
MAG-0031



DOVETAIL
MAG-1702



EARTH
MAG-3616



GRANITE
MAG-7026



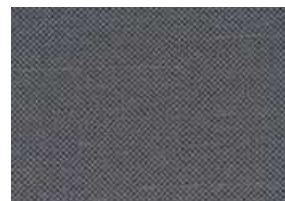
GINGER
MAG-6025



BLOSSOM
MAG-4203



SERENITY
MAG-2420



URBAN
MAG-8056



BREEZE
MAG-0003

CATEGORY D



TELA / FABRIC

MAGLIA

CATEGORY D



INDIGO
MAG-5559



MIDNIGHT
MAG-5450



GREENLAND
MAG-6443



SKY
MAG-2003



SAFARI
MAG-8022



MAGLIA PRIMROSE
MAG-2000



SAGE
MAG-0406



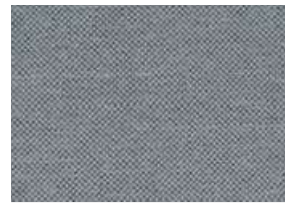
MARS
MAG-4227



TRUFFLE
MAG-4537



THUNDER
MAG-6016



ALASKA
MAG-4008



MINUIT
MAG-6028



TELA / FABRIC

CATEGORY D

MAGLIA



AÇAI
MAG-6030

COMPOSICIÓN | COMPOSITION:
VINYL / URETHANE TOPCOAT

PESO | WEIGHT: 680 g/m²

ANCHO | WIDTH: 137cm

LONGITUD DE LAS PIEZAS | ROLL LENGTH: ±30ml

CLASE IGNÍFUGA | FIRE PROOF NORM

EN 1021-1 (CIGARRO | CIGARETTE)

EN 1021-2 (LLAMA | FLAME)

ÖNORM B 3825 Gruppe 1

ÖNORM A 3800 Teil 1

DIN 4102 B2

UNE 23.727-90 1R/M.2

EN 71-2: 2006 + A1: 2007

NF P 92-503/M2

IMO A.652(16)Annex 1 8.2 and 8.3

(MED) Council Directive 96/98 EC on marine equipment

UNI 9175 (1987) / UNI 9175/FA1 (1994) Classe 1.IM

FMVSS 302

FAR 25/853

SOLIDEZ DEL COLOR A LA LUZ | COLOUR FASTNESS TO ARTIFICIAL LIGHT
ISO 105-B02: >7/8

RESISTENCIA A LA ABRASIÓN | ABRASION RESISTANCE
NÚMERO DE CICLOS/ NO. OF CYCLES: 100,000



TELA / FABRIC

SILVERTEX

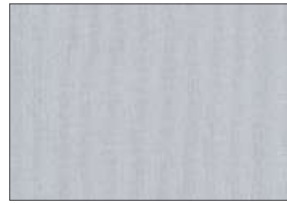
CATEGORY D



122-4004 ICE



122-0009 TAUPE



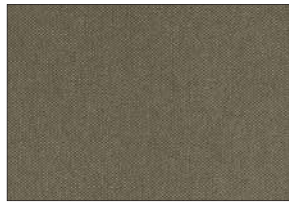
122-4001 PLATA



122-3001 TURQUOISE



122-1077 CREAM



122-4012 SHITAKE



122-4011 STERLING



122-3066 BALTIC



122-1051 SISAL



122-0073 LUGGAGE



122-4010 TITANIUM



122-3067 DELFT



122-1078 CHAMPAGNE



122-0005 MOCCA



122-4003 GRAPHITE



122-4002 STORM



122-1010 BEIGE



122-4024 METEOR



122-9002 CARBON



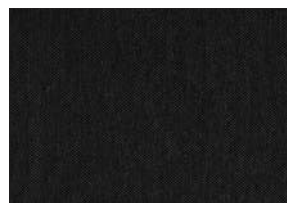
122-3068 JET



122-0002 SANDSTONE



122-5010 BOTTLE



122-9001 BLACK



122-3007 SAPPHIRE



TELA / FABRIC

SILVERTEX

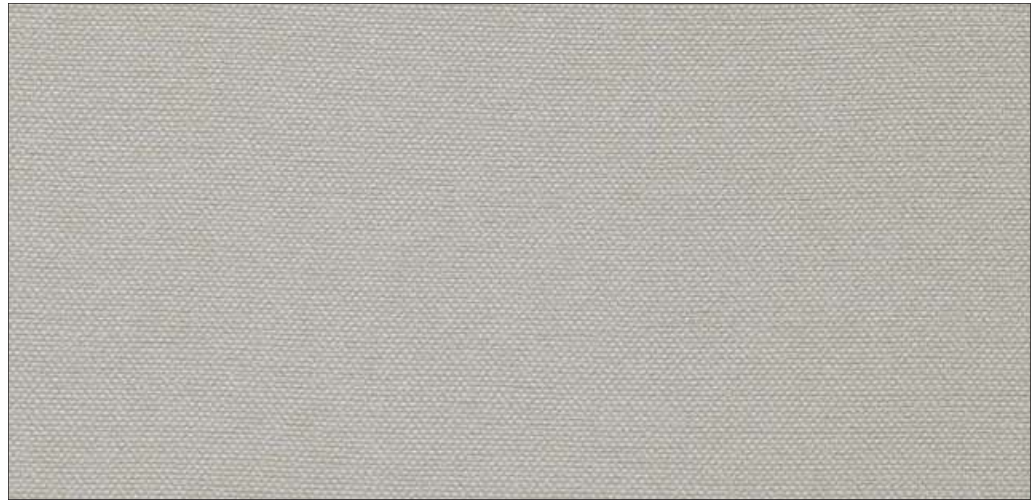
CATEGORY D



122-2003 COBRE



122-1014 UMBER



122-0001 MACADAMIA



122-5063 FOREST



122-7001 AUBERGINE



122-7002 MAGENTA



122-6065 SAFRAN



122-5020 BASIL



122-2016 RASPBERRY



122-2011 RED



122-6062 MELON



122-5008 PISTACHO



122-6004 RUBIN



122-2012 SUNKIST



122-0013 ORANGE



122-5019 CELERY



122-2064 WINE



122-6061 MANDARIN



122-5009 SAGE



TELA / FABRIC

CATEGORY D

SILVERTEX



122-5008 PISTACHO

COMPOSICIÓN | COMPOSITION:

COATING: 100% VINYL

BASE CLOTH: 100% POLYESTER HI-LOFT

PESO | WEIGHT: 685 g/m²

ANCHO | WIDTH: 137cm

LONGITUD DE LAS PIEZAS | ROLL LENGTH: ±30ml

CLASE IGNÍFUGA | FIRE PROOF NORM

Boston Fire Code - BFD 1X-1

CAL BT 117

FAR 25.853 (A) Appendix F Part I (a)(1)(ii)

Federal St. 191A M 5903.1

FMVSS 302

IMO PART 8 Upholstery

NFPA 260- Cover Fabric – Class I

NY/NJ Port of Authority

UFAC Fabric – Class I

SOLIDEZ DEL COLOR A LA LUZ | COLOUR FASTNESS TO ARTIFICIAL LIGHT

ISO 105-B02: >=7

RESISTENCIA A LA ABRASIÓN | ABRASION RESISTANCE

NÚMERO DE CICLOS/ NO. OF CYCLES: >300.000



TELA / FABRIC

PAVINTO

CATEGORY E



Lighthbeige F6411181



Birch F6411182



Smoke F6411183



Choco F6411184



Black F6411190



Cognac F6411186



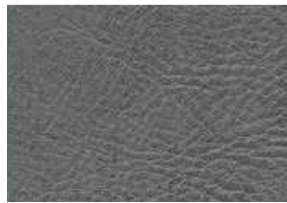
Tabacco F6411187



Wine F6411185



Carmine F6411234



Platinum F6411231



Sea Blue F6411232



Ligthgrey F6411233



TELA / FABRIC

CATEGORY E

PAVINTO



Polar F6411180

COMPOSICIÓN | COMPOSITION: 89% PVC + 11% PES+CO

PESO | WEIGHT: 800 g/m² ± 50g/m²

ANCHO | WIDTH: 137cm

ESPESOR | THICKNESS: 1,4mm ±0,2mm

CLASE IGNÍFUGA | FIRE PROOF NORM

1 IM (UNI 9175)

B1 (DIN 4102)

B2 (DIN 4102-1)

BS 5852 PART 0

BS 5852 PART 1

CAL TB 117

EN 1021-1 (CIGARRO | CIGARETTE)

EN1021-2 (LLAMA | FLAME)

IMO PART 8 UPHOLSTERY

M2 (NF P 92 503)

SOLIDEZ DEL COLOR A LA LUZ | COLOUR FASTNESS TO ARTIFICIAL LIGHT

EN ISO 105-B02: >=6

RESISTENCIA A LA ABRASIÓN | ABRASION RESISTANCE

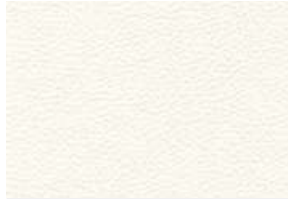
NÚMERO DE CICLOS/ NO. OF CYCLES: >150.000



TELA / FABRIC

SKAI TORONTO EN

CATEGORY E



White F6471002



Pearl F6471003



Corn F6471013



Birch F6471004



Ashgrey F6471011



Cappuccino F6471005



Olive Green F6471014



Carob F6471009



Slate grey F6471012



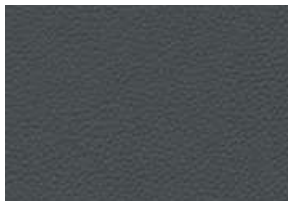
Cashmere F6471006



Cherry F6471008



Stone blue F6471001



Anthracite F6471015



Chestnut F6471007



Mocca F6471010



Black F6471016



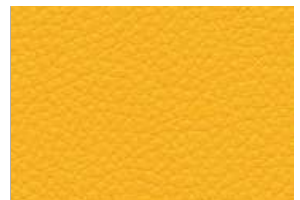
Atoll F6471021



Fire F6471020



OLime F6471019



Sun F6471023



Orange F6471022



Rosé F6471026



Nougat F6471026



Deep Sea F6471018



TELA / FABRIC

CATEGORY E

SKAI TORONTO EN



Sage F6471024

COMPOSICIÓN | COMPOSITION: PVC 72% - PU 1% - CO 27%

PESO | WEIGHT: 740 g/m²

ANCHO | WIDTH: 150cm

LONGITUD DE LAS PIEZAS | ROLL LENGTH: ±30ml

ESPESOR | THICKNESS: 1,6mm ±0,2ml

CLASE IGNÍFUGA | FIRE PROOF NORM

NF M2, BS5852 IS-0+1+5, EN1021-1+2,
DIN4102 (PART 1, B2), MVSS302, DIN53438 (PART 2)
ONMORM B3825 SCHER BRENNBAR (B1)
ONORMA 3800-1Q1

SOLIDEZ DEL COLOR A LA LUZ | COLOUR FASTNESS TO ARTIFICIAL LIGHT

EN ISO 105-B02: >=6

RESISTENCIA A LA ABRASIÓN | ABRASION RESISTANCE

NÚMERO DE CICLOS/ NO. OF CYCLES: >300.000



NUEVA COLECCIÓN TEJIDOS
INTERIOR

www.topsillasymesas.com

INDICE / INDEX

#CATEGORIA/CATEGORY A

MIRA	45
------	----

#CATEGORIA/CATEGORY C

BASKET FR	47
BIO RECYCLED FR	49
HIGHLAND	51
MARNA	55
RIVA	57

#CATEGORIA/CATEGORY D

COCO	60
CREDO	62
TWINKLE	64
WAVES / HABITS	66
SURPRISING / SOULMATE	68
CRISS CROSS / PARTNER	70
GLOW FR	72
HARVARD	74
NECESSAIRES FR	77
NECESSAIRES MELANGE FR	79
RESISTANCE EASY CLEAN FR	81
SAFETY VELVET STOPFIRE FR	83

#CATEGORIA/CATEGORY F

L'ESPRIT AFRICAIN	85
-------------------	----



TELA / FABRIC

MIRA

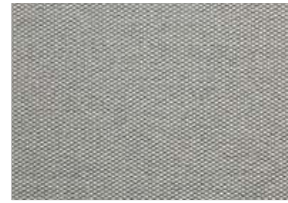
CATEGORY A



BRANCO 01138002



MALVA 01138012



NEBLINA 01138013



ABACATE 01138009



CAQUI 01138003



ROMÃ 01138007



TURQUESA 01138020



MUSGO 01138010



AVEIA 01138004



VERMELHO 01138023



AZUL 01138021



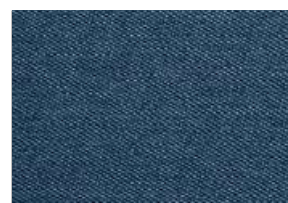
FLORESTA 01138024



PALHA 01138005



LAVA 01138022



OCEANO 01138001



GRANITO 01138014



CARVALHO 01138006



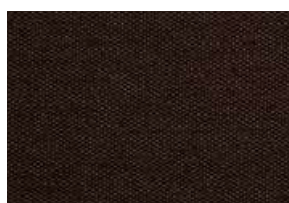
LARANJA 01138008



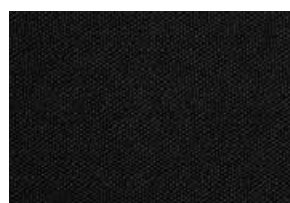
ANTRACITE 01138025



XISTO 01138015



ÉBANO 01138011



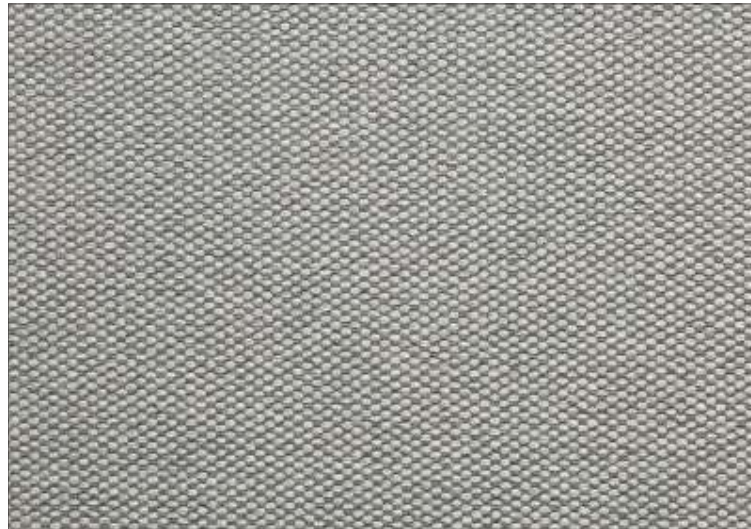
PRETO 01138016



TELA / FABRIC

CATEGORY A

MIRA



NEBLINA 01138013

COMPOSICIÓN | COMPOSITION: 100% PES

PESO | WEIGHT: 300 g/m² ±5%

ANCHO | WIDTH: 148cm ±2cm

LONGITUD DE LAS PIEZAS | ROLL LENGTH: ±50ml

CLASE IGNÍFUGA | FIRE PROOF NORM
EN 1021-1:2006 (CIGARRO/CIGARETTE)
BS 5852:2006 CRIB 0

RESISTENCIA A LA ABRASIÓN | ABRASION RESISTANCE
ISO 5470-2 NÚMERO CICLOS/ NO. OF CYCLES: 100,000

SVHC 155 QUÍMICOS, REGLAMENTO (EC) N.1907/2006
SVHC 155 CHEMICALS, REGULATION (EC) N.1907/2006

AUSENCIA DE COMPUESTOS AZO, FTALATOS Y DMF
ABSENCE OF AZO COMPOUNDS, PHTHALATES AND DMF

SOLIDEZ DEL COLOR A LA LUZ | COLOUR FASTNESS TO ARTIFICIAL LIGHT
EN ISO 105-B02: 4/5



TELA / FABRIC

BIO RECYCLED FR

CATEGORY D



02 Linen



03 Caffé Latte



04 Mushroom



05 Autumn Leaves



06 Ash Gray



07 Gray Stone



08 Greige



09 Terracotta



10 Brandy



11 Saffron



12 Leafy Green



13 Denim Blue



TELA / FABRIC

CATEGORY D

BIO RECYCLED FR



01 Sand

COMPOSICIÓN | COMPOSITION: 100% RECYCLED ROLEFIN

PESO | WEIGHT: 502 gr/ml

ANCHO | WIDTH: 139cm

CLASE IGNÍFUGA | FIRE PROOF NORM

BS 5852 PART 0

EN 1021-1

CAL 117

NFPA 260

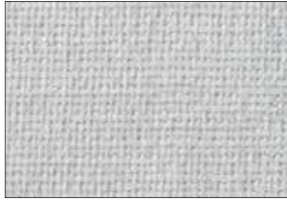
RESISTENCIA A LA ABRASIÓN | ABRASION RESISTANCE

ISO 5470-2 NÚMERO CICLOS/ NO. OF CYCLES: 40,000

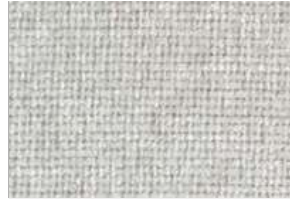


TELA / FABRIC

BASKET FR



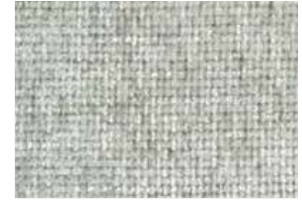
01 Pearl



02 Shell

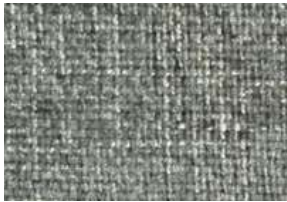


03 Desert



04 Steel

CATEGORY C



05 Plumb



06 Indigo



TELA / FABRIC

CATEGORY C

BASKET FR



01 Pearl

COMPOSICIÓN | COMPOSITION: 100% PL

PESO | WEIGHT: 714 gr/ml

ANCHO | WIDTH: 138cm

CLASE IGNÍFUGA | FIRE PROOF NORM

BS 5852 Source 0

RESISTENCIA A LA ABRASIÓN | ABRASION RESISTANCE

ISO 5470-2 NÚMERO CICLOS/ NO. OF CYCLES: >100,000

SOLIDEZ DEL COLOR A LA LUZ | COLOUR FASTNESS TO ARTIFICIAL LIGHT

EN ISO 105-B02: 5



TELA / FABRIC

HIGHLAND

CATEGORY C



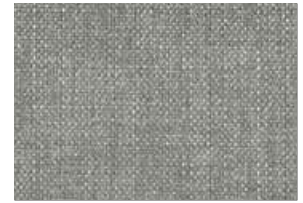
835 Hessian



313 Yellow



209 Wasabi



901 Silver



823 Chablis



300 Gold



229 Forest



911 Steel



905 Dove



321 Wheat



203 Emerald



954 Graphite



807 Mushroom



226 Lime



139 Aqua



903 Charcoal



841 Biscotti



200 Green



115 Turquoise



116 Navy



703 Mink



231 Olive



129 Ocean



105 Indigo



TELA / FABRIC

HIGHLAND

CATEGORY C



618 Blush



645 Cyclamen



402 Orange



412 Purple



646 Peony



400 Red



440 Scarlet



648 Fig



127 Lilac



405 Crimson



408 Terracotta



107 Cornflower



110 Pacific



192 Ink



207 Evergreen



208 Fern Green



211 Spruce



221 Dusty Sage



271 Celadon



314 Mustard



436 Paprika



481 Damsom



619 Rosewood



692 Heather



TELA / FABRIC

CATEGORY C



858 Cobble



877 Oyster



906 Ash



911 Steel

HIGHLAND



800 Beige



840 Beige red



TELA / FABRIC

CATEGORY C

HIGHLAND



321 Wheat

COMPOSICIÓN | COMPOSITION: 100% POLYESTER WITH MICROPOROUS FILM AND FR BACKCOATING

PESO | WEIGHT: 320 g/m²

ANCHO | WIDTH: 136cm

CLASE IGNÍFUGA | FIRE PROOF NORM

MARINE STANDARD

IMO PART 8 Upholstery

(WAS: A652 (16))

CAL TB 117

NFPA 260 USA

B1 GERMANY

EN 1021-1 (CIGARRO | CIGARETTE)

EN1021-2 (LLAMA | FLAME)

BS5852 PART 2

IGNITION SOURCE 5

BS7174: MEDIUM HAZARD

RESISTENCIA A LA ABRASIÓN | ABRASION RESISTANCE

ISO 5470-2 NÚMERO CICLOS/ NO. OF CYCLES: 70,000

SOLIDEZ DEL COLOR A LA LUZ | COLOUR FASTNESS TO ARTIFICIAL LIGHT

GRADE 6+



TELA / FABRIC

MARNA

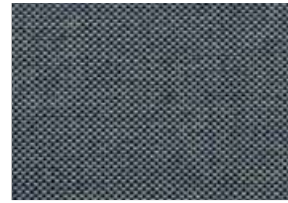
CATEGORY C



829 PARCHMENT



835 HESSIAN



103 DENIM



400 RED



901 SILVER



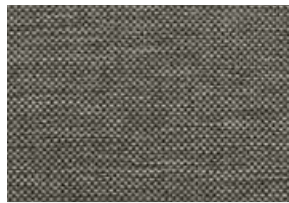
770 NUTMEG



129 OCEAN



614 CLOVER



919 ZINC



814 ESPRESSO



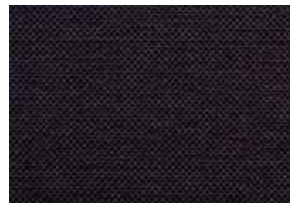
105 INDIGO



408 TERRACOTTA



903 CHARCOAL



481 DAMSON



954 GRAPHITE



202 AMETHYST



231 OLIVE



243 CACTUS



238 CITRUS



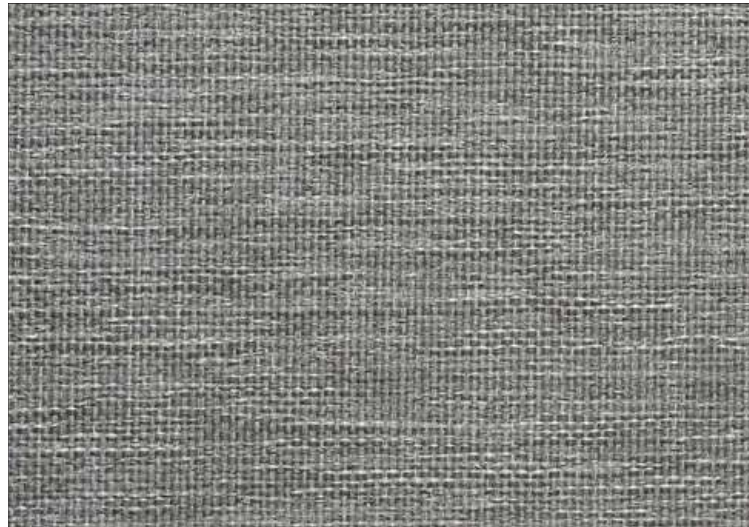
300 GOLD



TELA / FABRIC

CATEGORY C

MARNA



901 SILVER

COMPOSICIÓN | COMPOSITION: 100% POLYESTER WITH MICROPOROUS FILM AND FR BACKCOATING

PESO | WEIGHT: 400 g/m²

ANCHO | WIDTH: 136cm

CLASE IGNÍFUGA | FIRE PROOF NORM

BS 7176: MEDIUM HAZARD

BS 5852: 2006 IGNITION SOURCE 5

EN 1021-1 (CIGARRO | CIGARETTE)

EN1021-2 (LLAMA | FLAME)

B1 GERMANY

IMO PART 8 Upholstery

NFPA 260 USA

CAL 117

RESISTENCIA A LA ABRASIÓN | ABRASION RESISTANCE

ISO 5470-2 NÚMERO CICLOS/ NO. OF CYCLES: 75,000

SOLIDEZ DEL COLOR A LA LUZ | COLOUR FASTNESS TO ARTIFICIAL LIGHT

GRADE 5



TELA / FABRIC

RIVA

CATEGORY C



300 Gold



238 Citrus



770 Nutmeg



823 Chablis



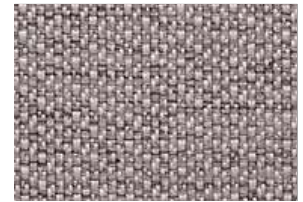
837 Stone



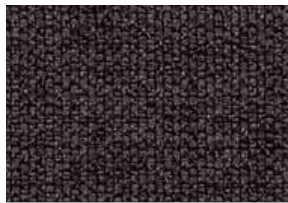
703 Mink



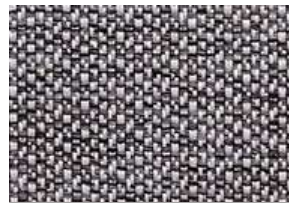
905 Dove



919 Zinc



903 Charcoal



904 Nickel



209 Wasabi



252 Willow



271 Celadon



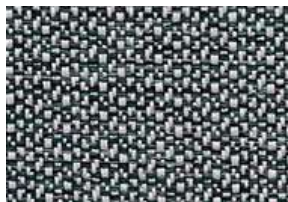
211 Spruce



108 Delph



231 Olive



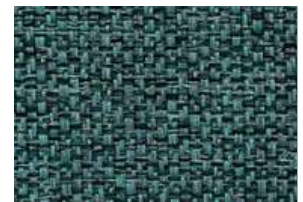
258 Juniper



207 Evergreen



219 Seafoam



129 Ocean



111 Peacock



134 Sky



117 Royal



412 Purple



TELA / FABRIC

RIVA



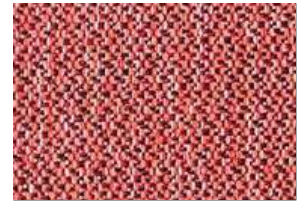
642 Thistle



646 Peony



467 Bordeaux



574 Dark Coral

CATEGORY C



618 Blush



437 Tuscan Red



637 Soft Peach



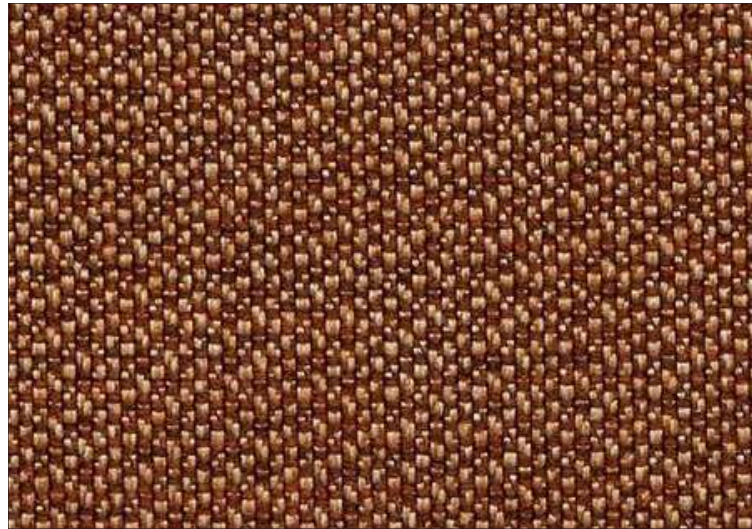
954 Graphite



TELA / FABRIC

CATEGORY C

RIVA



824 Ochre

COMPOSICIÓN | COMPOSITION: 100% POLYESTER WITH MICROPOROUS FILM AND FR LAMINATE

PESO | WEIGHT: 400 g/m²

ANCHO | WIDTH: 140cm

CLASE IGNÍFUGA | FIRE PROOF NORM

BS 7176: MEDIUM HAZARD

BS 5852: 2006 IGNITION SOURCE 5

EN 1021-1 (CIGARRO | CIGARETTE)

EN1021-2 (LLAMA | FLAME)

IMO PART 8 Upholstery

NFPA 260 USA

CAL 117

RESISTENCIA A LA ABRASIÓN | ABRASION RESISTANCE

ISO 5470-2 NÚMERO CICLOS/ NO. OF CYCLES: 60,000

SOLIDEZ DEL COLOR A LA LUZ | COLOUR FASTNESS TO ARTIFICIAL LIGHT

GRADE 6+



TELA / FABRIC

COCO

CATEGORY D



110 Pacific



925 Putty



242 Laurel



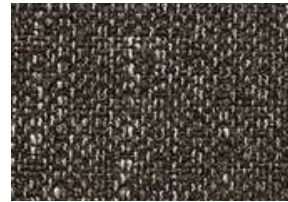
411 Spice



111 Peacock



508 Ivory



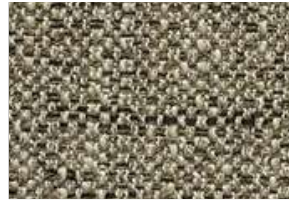
911 Steel



436 Paprika



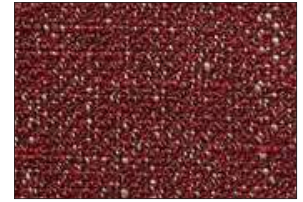
122 Wedgewood Blue



709 Pecan



919 Zinc



446 Redcurrant



155 Duck Egg Blue



814 Espresso



TELA / FABRIC

CATEGORY D

COCO



508 Ivory

COMPOSICIÓN | COMPOSITION: 100% POLYESTER WITH FR BACKCOATING

PESO | WEIGHT: 800 g/m²

ANCHO | WIDTH: 140cm

CLASE IGNÍFUGA | FIRE PROOF NORM

EN 1021-1 (CIGARRO | CIGARETTE)

EN1021-2 (LLAMA | FLAME)

IMO PART 8 Upholstery

NFPA 260 USA

CAL TB117

BS5852 2006 PART 2 IGNITION SOURCE 5

BS7176:MEDIUM HAZARD

RESISTENCIA A LA ABRASIÓN | ABRASION RESISTANCE

ISO 5470-2 NÚMERO CICLOS/ NO. OF CYCLES: 100,000

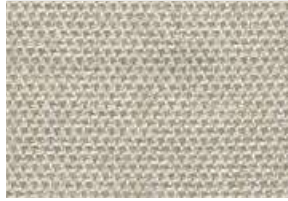
SOLIDEZ DEL COLOR A LA LUZ | COLOUR FASTNESS TO ARTIFICIAL LIGHT

GRADE 5

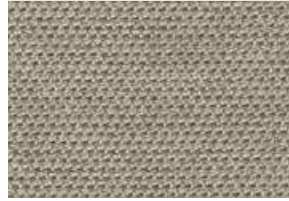


TELA / FABRIC

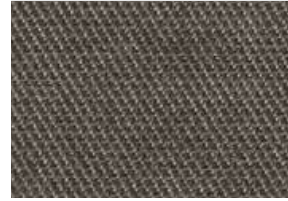
CREDO



Credo 02



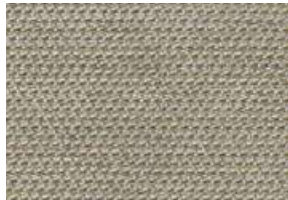
Credo 05



Credo 11



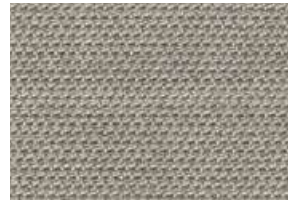
Credo 18



Credo 20



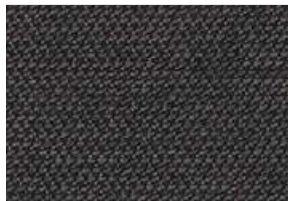
Credo 39



Credo 51



Credo 52



Credo 53



Credo 54



Credo 61

CATEGORY D



TELA / FABRIC

CATEGORY D

CREDO



Credo 45

COMPOSICIÓN | COMPOSITION: 55%PP + 22%PES + 17%PES REC + 3%CO REC + 3%OF

PESO | WEIGHT: 750 gr/ml

ANCHO | WIDTH: 140+4cm

CLASE IGNÍFUGA | FIRE PROOF NORM

BS 5852 PART 0

EN 1021-1

CAL TB-117

NFPA 260

RESISTENCIA A LA ABRASIÓN | ABRASION RESISTANCE

ISO 5470-2 NÚMERO CICLOS/ NO. OF CYCLES: 100,000

SOLIDEZ DEL COLOR A LA LUZ | COLOUR FASTNESS TO ARTIFICIAL LIGHT

ISO 105-B02: >6



TELA / FABRIC

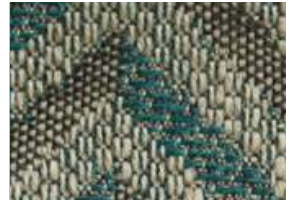
TWINKLE



01 Natural



03 Green Mint



05 Baltic Mixed



07 Navy Blue Mixed



02 Greige



04 Mixed Tomato



06 Banana

CATEGORY D



TELA / FABRIC

CATEGORY D

TWINKLE



03 Green Mint

COMPOSICIÓN | COMPOSITION: 56% + 20%PL + 16%VI + 8%LI

PESO | WEIGHT: 680 gr/ml

ANCHO | WIDTH: 140cm

CLASE IGNÍFUGA | FIRE PROOF NORM
BS 5852 PART 1

RESISTENCIA A LA ABRASIÓN | ABRASION RESISTANCE
ISO 5470-2 NÚMERO CICLOS/ NO. OF CYCLES: 50,000

SOLIDEZ DEL COLOR A LA LUZ | COLOUR FASTNESS TO ARTIFICIAL LIGHT
ISO 105-B02: 4



TELA / FABRIC

WAVES



01 Natural



03 Green Mint



05 Baltic



06 Cocoa



02 Greige



04 Hot Coral

CATEGORY D

HABITS



01 Natural



03 Green Mint



05 Baltic



06 Cocoa

CATEGORY D



02 Greige



04 Hot Coral



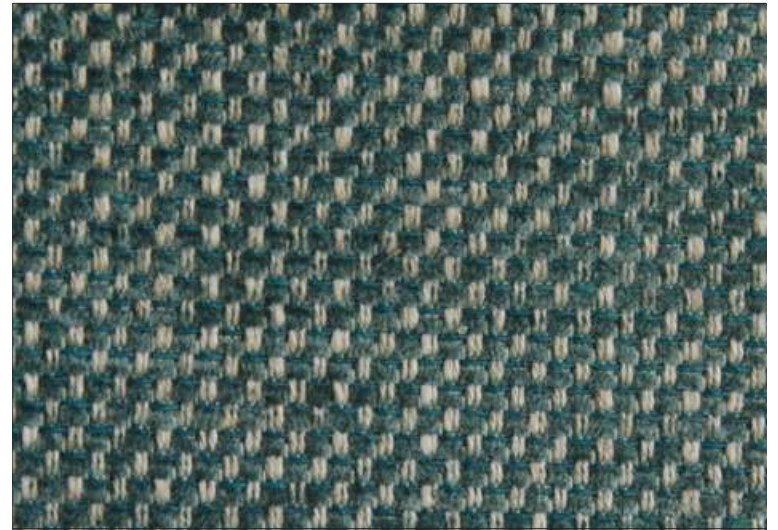
TELA/ FABRIC

CATEGORY D

WAVES / HABITS



01 Natural



05 Baltic

COMPOSICIÓN | COMPOSITION:

WAVES: 49%CO + 25%PL + 18%VI + 9%LI

COMPOSICIÓN | COMPOSITION:

HABITS: 41%CO + 29%PL + 20%VI + 10%LI

PESO | WEIGHT: 680 g/ml

ANCHO | WIDTH: 140cm

CLASE IGNÍFUGA | FIRE PROOF NORM

BS 5852 PART 1

RESISTENCIA A LA ABRASIÓN | ABRASION RESISTANCE

ISO 5470-2 NÚMERO CICLOS/ NO. OF CYCLES: 50,000

SOLIDEZ DEL COLOR A LA LUZ | COLOUR FASTNESS TO ARTIFICIAL LIGHT

ISO 105-B02: 4



TELA / FABRIC

SURPRISING



01 Natural



03 Green Mint



05 Baltic



06 Cocoa



02 Greige



04 Hot Coral

CATEGORY D

SOULMATE



01 Natural



03 Green Mint



05 Baltic



06 Cocoa

CATEGORY D



02 Greige



04 Hot Coral



TELA / FABRIC

CATEGORY D

SURPRISING/SOULMATE



04 Hot Coral



06 Cocoa

COMPOSICIÓN | COMPOSITION:

SURPRISING: 39%CO + 20%PL + 33%VI + 8%LI

COMPOSICIÓN | COMPOSITION:

SOULMATE: 49%CO + 23%PL + 19%VI + 9%LI

PESO | WEIGHT: 680 g/ml

ANCHO | WIDTH: 140cm

CLASE IGNÍFUGA | FIRE PROOF NORM

BS 5852 PART 1

RESISTENCIA A LA ABRASIÓN | ABRASION RESISTANCE

ISO 5470-2 NÚMERO CICLOS/ NO. OF CYCLES: 50,000

SOLIDEZ DEL COLOR A LA LUZ | COLOUR FASTNESS TO ARTIFICIAL LIGHT

ISO 105-B02: 4



TELA / FABRIC

CRISS CROSS



01 Natural



03 Green Mint



05 Baltic



06 Cocoa



02 Greige



04 Hot Coral

CATEGORY D

PARTNER



01 Natural



03 Green Mint



05 Baltic



06 Cocoa

CATEGORY D



02 Greige



04 Hot Coral



TELA / FABRIC

CATEGORY D

CRISS CROSS/PARTNER



02 Greige



01 Natural

COMPOSICIÓN | COMPOSITION:

CRISS CROSS: 33%CO +21%PL + 38%VI + 8%LI

COMPOSICIÓN | COMPOSITION:

PARTNER: 33%CO +21%PL + 38%VI + 8%LI

PESO | WEIGHT: 680 g/ml

ANCHO | WIDTH: 140cm

CLASE IGNÍFUGA | FIRE PROOF NORM

BS 5852 PART 1

RESISTENCIA A LA ABRASIÓN | ABRASION RESISTANCE

ISO 5470-2 NÚMERO CICLOS/ NO. OF CYCLES: 50,000

SOLIDEZ DEL COLOR A LA LUZ | COLOUR FASTNESS TO ARTIFICIAL LIGHT

ISO 105-B02: 4



TELA / FABRIC

GLOW FR

CATEGORY D



Glow 02



Glow 04



Glow 05



Glow 07



Glow 08



Glow 10



Glow 11



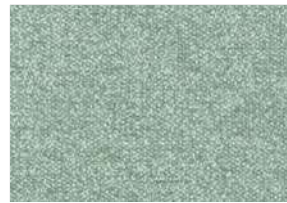
Glow 13



Glow 19



Glow 32



Glow 34



Glow 45



Glow 50



Glow 51



Glow 52



Glow 53



Glow 54



Glow 59



Glow 61



Glow 62



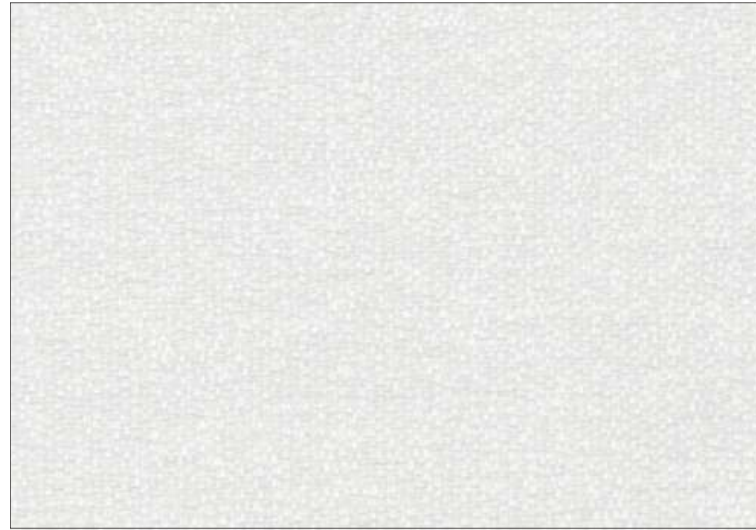
Glow 71



TELA / FABRIC

CATEGORY D

GLOW FR



Glow 01

COMPOSICIÓN | COMPOSITION: 63%PES + 17%PP +16% PES REC + 2%CO REC 2% OF REC

PESO | WEIGHT: 714 g/ml

ANCHO | WIDTH: 140cm

CLASE IGNÍFUGA | FIRE PROOF NORM

BS 5852 PART 0

EN 1021-1

CAL TB 117

NFPA 260

RESISTENCIA A LA ABRASIÓN | ABRASION RESISTANCE

ISO 5470-2 NÚMERO CICLOS/ NO. OF CYCLES: 60,000

SOLIDEZ DEL COLOR A LA LUZ | COLOUR FASTNESS TO ARTIFICIAL LIGHT

ISO 105-B02: 5/6



TELA / FABRIC

HARVARD

CATEGORY D



321 WHEAT



805 CREAM



813 LINEN



835 HESSIAN



858 COBBLE



905 DOVE



253 CARDAMOM



919 ZINC



902 SLATE



131 AZURE



192 INK



105 INDIGO



791 MOCHA



446 REDCURRRANT



481 DAMSON



949 NOIR



904 PEWTER



442 BURNT ORANGE



151 TEAL



299 FOREST



252 WILLOW



613 PALE PINK



618 BLUSH

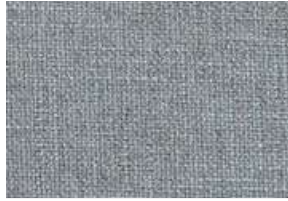


648 FIG



TELA / FABRIC

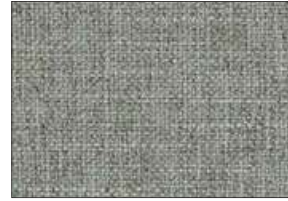
HARVARD



906 ASH



925 PUTTY



971 NICKEL

CATEGORY D



TELA / FABRIC

CATEGORY D

HARVARD



791 MOCHA

COMPOSICIÓN | COMPOSITION: 100% POLYESTER WITH FR BACKCOATING

PESO | WEIGHT: 700 g/m²

ANCHO | WIDTH: 138cm

CLASE IGNÍFUGA | FIRE PROOF NORM

IMO PART 8 Upholstery

NFPA 260 USA

B1 GERMANY

EN 1021-1 (CIGARRO | CIGARETTE)

EN1021-2 (LLAMA | FLAME)

BS5852 PART 2

IGNITION SOURCE 5

BS7176: MEDIUM HAZARD

RESISTENCIA A LA ABRASIÓN | ABRASION RESISTANCE

ISO 5470-2 NÚMERO CICLOS/ NO. OF CYCLES: 130,000

SOLIDEZ DEL COLOR A LA LUZ | COLOUR FASTNESS TO ARTIFICIAL LIGHT

GRADE 5+



TELA / FABRIC

NECESSAIRES FR



01 Natural Linen



03 Linen Raffia



05 Forest Green



07 Dark Greige



02 Linen Gray



04 Terracotta Mix



06 Blue Mood

CATEGORY D



TELA / FABRIC

CATEGORY D

NECESSAIRES FR



03 Linen Raffia

COMPOSICIÓN | COMPOSITION: 54% PC + 46%PL

PESO | WEIGHT: 600 g/ml

ANCHO | WIDTH: 140cm

CLASE IGNÍFUGA | FIRE PROOF NORM

EN 1021-1 (CIGARRO | CIGARETTE)

BS5852 CIGARETTE

CAL TB 117

NFPA 260 CLASS 1

RESISTENCIA A LA ABRASIÓN | ABRASION RESISTANCE

ISO 5470-2 NÚMERO CICLOS/ NO. OF CYCLES: 40,000



TELA / FABRIC

NECESSAIRES MELANGE FR



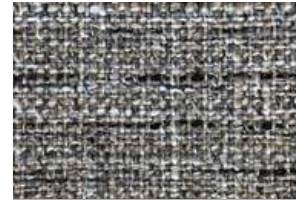
01 Natural Linen



03 Linen Raffia



05 Forest Green



07 Dark Greige



02 Linen Gray



04 Terracota Mix



06 Blue Mood

CATEGORY D



TELA / FABRIC

CATEGORY D

NECESSAIRES MELANGE FR



07 Dark Greige

COMPOSICIÓN | COMPOSITION: 54% PC + 46%PL

PESO | WEIGHT: 615 g/ml

ANCHO | WIDTH: 140cm

CLASE IGNÍFUGA | FIRE PROOF NORM

EN 1021-1 (CIGARRO | CIGARETTE)

BS5852 CIGARETTE

CAL TB 117

NFPA 260 CLASS 1

RESISTENCIA A LA ABRASIÓN | ABRASION RESISTANCE

ISO 5470-2 NÚMERO CICLOS/ NO. OF CYCLES: 40,000



TELA / FABRIC

RESISTANCE EASY CLEAN FR

CATEGORY D



01 Pale Sand



05 Ash Rose



09 Aqua Marine



12 Safari Green



02 Light Camel



06 Marsala



10 Forest Green



13 Horizon Blue



03 Greige



07 Silver Gray



11 Denim Blue



14 Midnight Blue



04 Taupe



08 Deep Gray



TELA / FABRIC

CATEGORY D

RESISTANCE EASY CLEAN FR



09 Aqua Marine

COMPOSICIÓN | COMPOSITION: 91%PL + 9%CO

PESO | WEIGHT: 780 g/ml

ANCHO | WIDTH: 140cm

CLASE IGNÍFUGA | FIRE PROOF NORM

EN 1021-1 (CIGARRO | CIGARETTE)

BS5852 CIGARETTE

CAL TB 117

NFPA 260 CLASS 1

RESISTENCIA A LA ABRASIÓN | ABRASION RESISTANCE

ISO 5470-2 NÚMERO CICLOS/ NO. OF CYCLES: 200,000

SOLIDEZ DEL COLOR A LA LUZ | COLOUR FASTNESS TO ARTIFICIAL LIGHT

EN ISO 105-B02: 5/6



TELA / FABRIC

SAFETY VELVET STOPFIRE FR

CATEGORY D

			
26 WHITE	1 VANILLA	2 NUDE CREAM	3 CHAMOMILLE
			
4 LATTÉ	5 BRONZE BROWN	6 SIMPLY TAUPE	9 PLAZA TAUPE
			
7 GREIGE	8 TAUPE GRAY	10 BISON	11 BROWN
			
12 CARIL	13 AMBAR	14 LIPSTICK RED	15 SYRAH
			
16 POTENT PURPLE	17 CAMEL	18 MOSS GREEN	19 EDEN GREEN
			
20 BLACK FOREST	21 TROPICAL GREEN	22 INK BLUE	23 CHARCOAL GRAY



TELA / FABRIC

CATEGORY D

SAFETY VELVET STOPFIRE FR



24 PAVEMENT GRAY



25 BLACK



13 AMBAR

COMPOSICIÓN | COMPOSITION: 100% POLIESTER

PESO | WEIGHT: 588 g/ml

ANCHO | WIDTH: 140cm

CLASE IGNÍFUGA | FIRE PROOF NORM

BS5852 PART 0

BS5852 PART 1

RESISTENCIA A LA ABRASIÓN | ABRASION RESISTANCE

ISO 5470-2 NÚMERO CICLOS/ NO. OF CYCLES: 100,000

SOLIDEZ DEL COLOR A LA LUZ | COLOUR FASTNESS TO ARTIFICIAL LIGHT

EN ISO 105-B02: 4/6



TELA / FABRIC

L'ESPRIT AFRICAIN



02 Nuances de Dune



02 Nuances de Dune



03 Plage Africaine



04 Lin Marin

CATEGORY F



05 Bleu Zanzibar



TELA / FABRIC

CATEGORY F

L'ESPRIT AFRICAIN



01 Serengeti Gris

COMPOSICIÓN | COMPOSITION: 30%VI + 29%CO + 27% + 14%LI

PESO | WEIGHT: 650 g/ml

ANCHO | WIDTH: 140cm

CLASE IGNÍFUGA | FIRE PROOF NORM

BS5852 PART 0

BS5852 PART 1

CALL TB117

RESISTENCIA A LA ABRASIÓN | ABRASION RESISTANCE

ISO 5470-2 NÚMERO CICLOS/ NO. OF CYCLES: 45,000

SOLIDEZ DEL COLOR A LA LUZ | COLOUR FASTNESS TO ARTIFICIAL LIGHT

EN ISO 105-B02: 4



NUEVA COLECCIÓN TEJIDOS
PIEL

www.topsillasymesas.com



TELA / FABRIC

PACIFIC



601



604



679



670



663



648



771



629



659



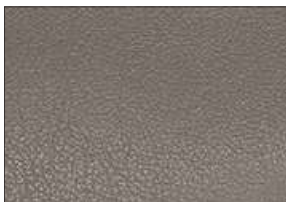
649



609



711



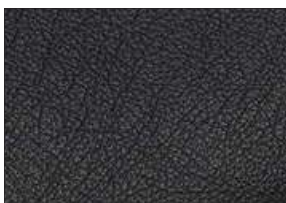
660



641



655



770

PIEL / LEATHER



751



647



579



677



577



TELA / FABRIC

PIEL / LEATHER

PACIFIC



641

COMPOSICIÓN | COMPOSITION: PIEL | LEATHER

PESO | WEIGHT: 588 g/m²

ANCHO | WIDTH: 140cm

CLASE IGNÍFUGA | FIRE PROOF NORM

EN 1021-1 (CIGARRO | CIGARETTE) BS5852 PART 0

EN 1021-2 (LLAMA | FLAME) BS5852 PART 1

RESISTENCIA A LA ABRASIÓN | ABRASION RESISTANCE

BS EN 12947/2: 100.000 CC

SOLIDEZ DEL COLOR A LA LUZ | COLOUR FASTNESS TO ARTIFICIAL LIGHT

EN ISO 105-B02: >5



TELA / FABRIC

TUSCANIA



2001 cobblestone



2010 celery



2009 rust



2008 cognac



2002 biscotto



2003 green



2005 bordeaux



2006 brown



2012 notte



2011 lavanda



2007 blackwood



2004 dark brown

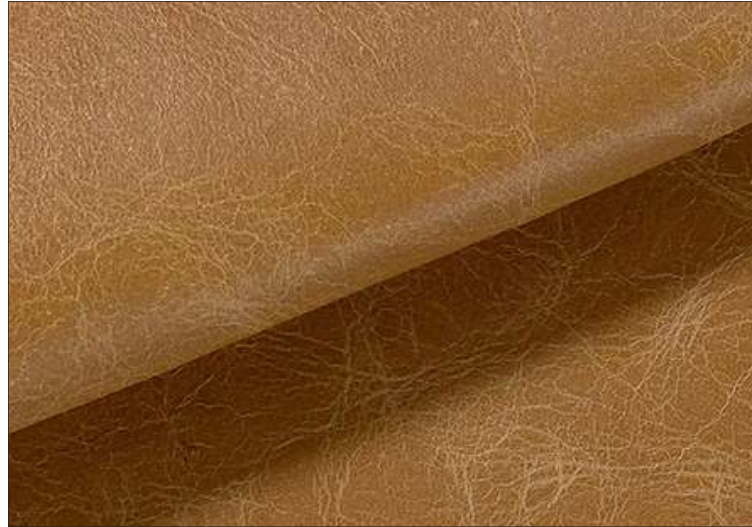
PIEL / LEATHER



TELA / FABRIC

PIEL / LEATHER

TUSCANIA



2002 biscotto

COMPOSICIÓN | COMPOSITION: PIEL | LEATHER

PESO | WEIGHT: 588 g/m²

ANCHO | WIDTH: 140cm

CLASE IGNÍFUGA | FIRE PROOF NORM

CIGARRET TEST BS5852: PASS

MATCH TEST BS5852: PASS

RESISTENCIA A LA ABRASIÓN | ABRASION RESISTANCE

BS EN 12947/2: 100.000 CC

SOLIDEZ DEL COLOR A LA LUZ | COLOUR FASTNESS TO ARTIFICIAL LIGHT

EN ISO 105-B02: >5



NUEVA COLECCIÓN TEJIDOS
TOP SILLAS Y MESAS

www.topsillasymasas.com

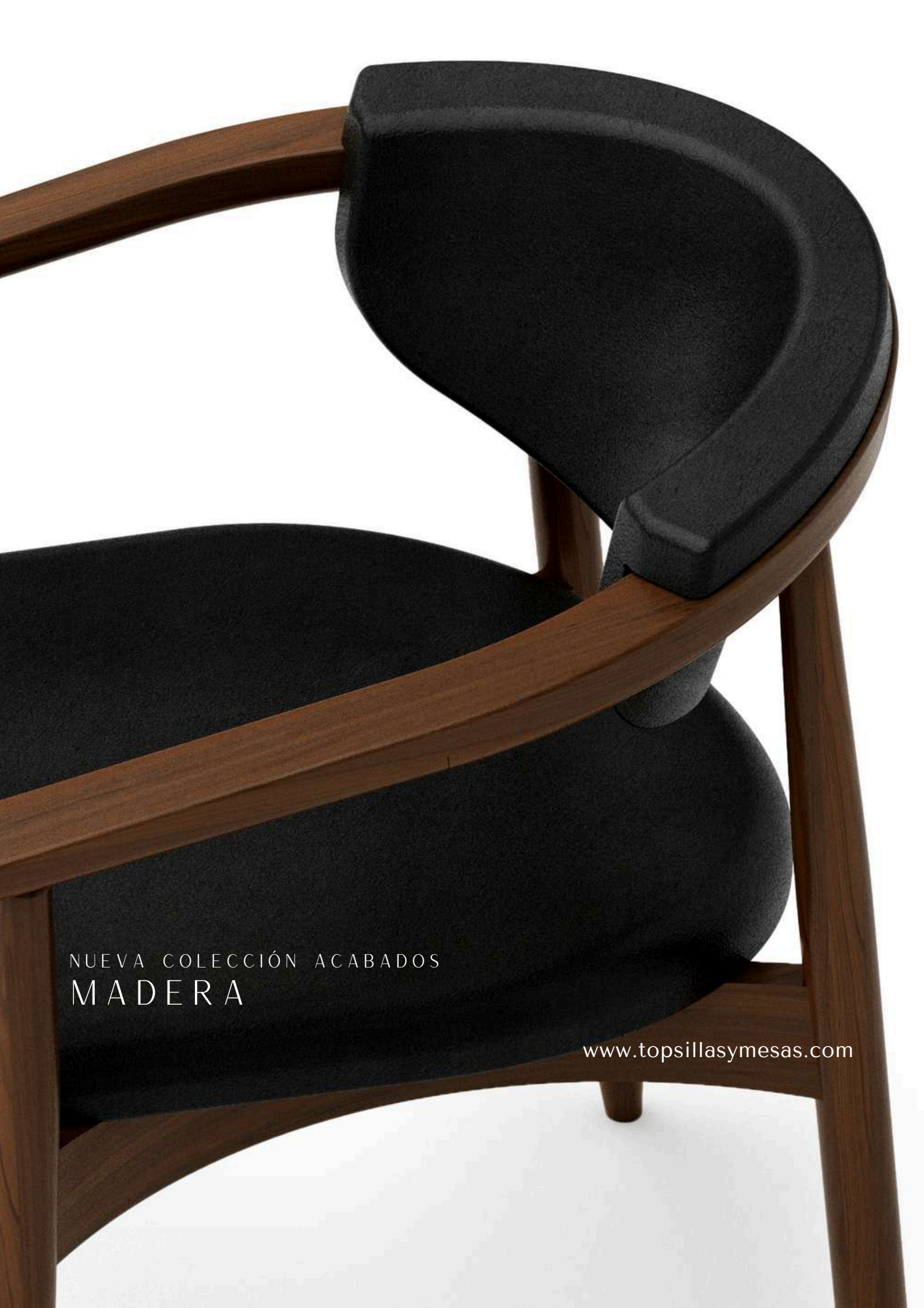
Parque Industrial P.I.S.A. - C/Balance 24, 41927 - Mairena del Aljarafe - Sevilla - España. ☎ 954358960 / 672469831

TOP
SILLAS Y MESAS



NUEVA COLECCIÓN ACABADOS

www.topsillasymasas.com



NUEVA COLECCIÓN ACABADOS
MADERA

www.topsillasymasas.com



ACABADOS DE MADERA / WOOD FINISHINGS



CF34



CF70



CF61



CF10



CF11



CF25



CF24



CF17



CF19

CF - Madera de haya barnizada a base de solvente / Solvent-based beech wood stain colour

Los colores son solo indicativos / Colours are only indicative



ACABADOS DE MADERA / WOOD FINISHINGS



CFP87



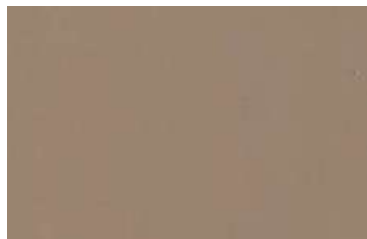
CFP72



CFP73



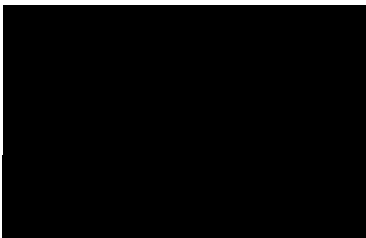
CFP90



CFP91



CFP92



CFP88

CFP - Acabados pigmentados / Pigmented finishings

Los colores son solo indicativos / Colours are only indicative



ACABADOS DE MADERA / WOOD FINISHINGS



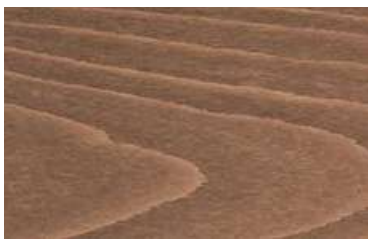
CFA111



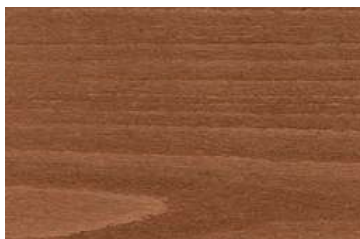
CFA146



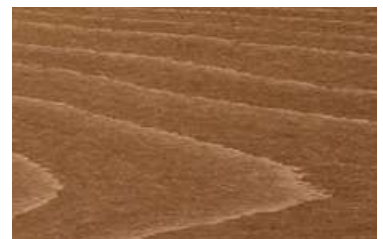
CFA159



CFA150



CFA151



CFA123



CFA152



CFA116



CFA125



CFA124



CFA117



CFA119



CFA155



CFA160



CFA161

CFA - Madera de haya barnizada al agua / Water-based beech wood stain colour

Los colores son solo indicativos / Colours are only indicative



ACABADOS DE MADERA / WOOD FINISHINGS



CCFA200



CCFA205



CCFA209



CCFA204



CCFA208



CCFA207

CCFA - Madera de fresno barnizada al agua / Water-based ash wood stain colour

Costo adicional para los colores de madera del cliente / Gross additional cost for customer wood color matching	QTD	CFA/CF/CCFA	CFP
	1-24	9€	13€
	25-50	6€	11€
	51-100	5€	10€
	+100	0€	0€







- TOP SILLAS Y MESAS se reserva el derecho de cambiar en cualquier momento y sin previo aviso el coste de desarrollo de un color de madera personalizado según las especificaciones del color.

- TOP SILLAS Y MESAS reserves the right to change at any time and without prior notice the development fee of matching a custom wood stain according to the colour specification.













Los colores son solo indicativos / Colours are only indicative



ACABADOS DE MADERA / WOOD FINISHINGS

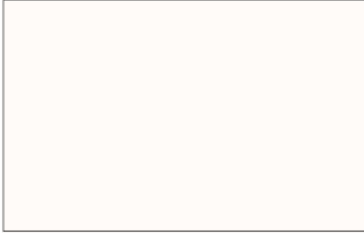
TIPO DE ESTRUCTURA TYPE OF FRAME	CFP	ANOTACIONES REMARKS
	16€	Estructura mesa bar 4 patas 4 feet bar table frame
	13€	Estructura 4 patas 4 feet frame
	11€	Estructura de mesa baja 4 patas 4 feet coffee table frame
	11€	Estructura de mesa baja 4 patas 4 feet coffee table frame
	9€	Estructuras Frames
	13€	Estructuras Frames



TIPO DE ESTRUCTURA TYPE OF FRAME		CFP	ANOTACIONES REMARKS
SILLA / CHAIR		6€	Solo patas Feet only
		11€	Estructura completa asiento tapizado Solid wooden frame with upholstered seat
		13€	Estructura completa asiento de madera Solid wooden frame with wooden seat
SILLÓN / ARMCHAIR		9€	Solo patas Feet only
		13€	Estructura completa asiento tapizado Solid wooden frame with upholstered seat
		16€	Estructura completa asiento de madera Solid wooden frame with wooden seat
TABURETE / STOOL		9€	Solo patas Feet only
		13€	Estructura completa asiento tapizado Solid wooden frame with upholstered seat
		16€	Estructura completa asiento de madera Solid wooden frame with upholstered seat
SILLÓN / ARMCHAIR		9€	Solo patas Feet only
		11€	Solo patas Feet only
		16€	Brazos y patas Arms and feet



LAMINADOS / LAMINATE



B 070 FA



N 005 ROCHE



C 128 EXM



B 134 EXM



G 087 EXM



H 028 SEV



H 029 SEV



C 047 FA



T 105 FA

-CONSÚLTENOS POR OTROS COLORES
-FOR OTHER COLORS, PLEASE CONSULT US

Los colores son solo indicativos / Colours are only indicative



CANTOS / EDGES



B 070 FA - OR



N 005 ROCHE - OR



C 128 EXM - OR



B 134 EXM - OR



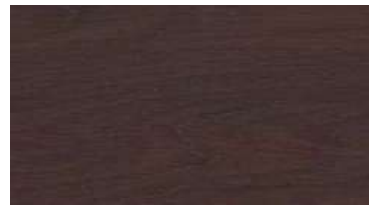
G 087 EXM - OR



H 028 SEV - OR



H 029 SEV - OR



C 047 FA - OR



T 105 FA - OR

-CONSÚLTENOS POR OTROS COLORES
-FOR OTHER COLORS, PLEASE CONSULT US

Los colores son solo indicativos / Colours are only indicative



MELAMINAS / MELAMINE



H 1486 ST36



H 1400 ST36



H 1277 ST9



H 1582 ST15



H 1615 ST9



H 3734 ST9



H 1150 ST10



D 854 BS

-CONSÚLTENOS POR OTROS COLORES
-FOR OTHER COLORS, PLEASE CONSULT US

Los colores son solo indicativos / Colours are only indicative



CANTOS / EDGES



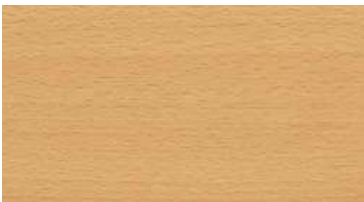
H 1486 ST36 - OR



H 1400 ST36 - OR



H 1277 ST9 - OR



H 1582 ST15 - OR



H 1615 ST9 - OR



H 3734 ST9 - OR



H 1150 ST10 - OR



D 854 BS - OR

-CONSÚLTENOS POR OTROS COLORES
-FOR OTHER COLORS, PLEASE CONSULT US

Los colores son solo indicativos / Colours are only indicative



NUEVA COLECCIÓN ACABADOS
TOP SILLAS Y MESAS

www.topsillasymasas.com

Parque Industrial P.I.S.A. - C/Balance 24, 41927 - Mairena del Aljarafe - Sevilla - España. ☎ 954358960 / 672469831